

Energy Dissipation in Atomic Force Microscopy and Atomic Loss Processes

Peter M. Hoffmann*

Department of Physics, Wayne State University, 666 W. Hancock, Detroit, Michigan 48201

Steve Jeffery and John B. Pethica

Department of Materials, University of Oxford, Parks Road, Oxford OX1 3PH, United Kingdom

H. Özgür Özer and Ahmet Oral

Department of Physics, Bilkent University, Ankara, Turkey
(Received 24 May 2001; published 6 December 2001)

Atomic scale dissipation is of great interest in nanomechanics and atomic manipulation. We present dissipation measurements with a linearized, ultrasmall amplitude atomic force microscope which is capable of measuring dissipation at chosen, fixed separations. We show that the dynamic dissipation in the non-contact regime is of the order of a few 10–100 meV per cycle. This dissipation is likely due to the motion of a bistable atomic defect in the tip-surface region. In the contact regime we observe dc hysteresis associated with nanoscale plasticity. We find the hysteretic energy loss to be 1 order of magnitude higher for a silicon surface than for copper.

DOI: 10.1103/PhysRevLett.87.265502

PACS numbers: 62.25.+g, 62.40.+i, 68.35.-p, 68.37.Ps

The interaction potential of an individual atomic bond can now be mapped out by atomic force microscopy (AFM) [1,2]. At larger separations the potential is found to be conservative, as might be expected, but at smaller separations the interaction becomes hysteretic or irreversible. The onset of this dissipation is of considerable interest, both because atomic manipulation relies on the fine control and understanding of irreversible atom motion and because it suggests that loss processes at individual, specified atomic sites can be directly characterized and imaged. However, the origin of the site dependent energy losses in AFM has been the subject of much dispute, not least because of their large magnitude, up to 10 eV per approach-retraction cycle, with a strong, possibly exponential function of the tip-sample separation [3–5]. Attempts have been made to explain the dissipation by a disturbance by the moving tip of some equilibrium property such as the phonon gas in the solid [6] or the electromagnetic field between tip and sample [7]. However, these give only weak deviations from equilibrium, and the energy coupled is generally much too low to explain the experimentally observed dissipation [6,8]. Dissipation at larger separations can also arise due to moving mirror charges, if the contact potential is uncompensated.

Recently, Gauthier and Tsukada [9] have shown that the observed magnitude and separation dependence of the energy loss could be explained by considering the overall dynamics of the tip trajectory. The physical origin lies in the nonlinearity of the interaction, and the bistability of the resonance curve. Thus the dissipation is the result of the large oscillation amplitude used in current experiments, which are much greater than the length scale of the interaction, every cycle being a complete approach and retraction with its associated positional hysteresis. Their model suggests that dissipation is not *only* associated with

some locally specific process and that large amplitude experiments cannot discriminate between the mechanisms. In this paper we introduce a small amplitude AFM technique which avoids the bistability question, and allows us to directly measure energy dissipation at a specific, constant, tip-surface separation. We find that there is still significant dissipation when the tip and surface are definitely not in contact, up to 0.2 eV/cycle at smaller separations, and with a strong separation dependence. We show that this can be quantitatively explained by atomic transitions with energies around 0.5 eV at sites near the interacting atoms, analogous to internal friction.

The measurements presented in this paper were obtained using sub-Å amplitudes [10] at frequencies well below the first lever resonance. In this mode, the AFM is linear which makes direct quantitative measurements of the force gradient possible. Stiff levers (>100 N/m) were used to avoid instability. This necessitates a very sensitive displacement sensor. In our case, the lever displacement is measured using a fiber interferometer with a sensitivity of a few 100 mV/Å and a noise floor of 3×10^{-4} Å/ $\sqrt{\text{Hz}}$. The lever base is driven at a frequency around 1 kHz far below its first resonance (≈ 12 kHz) and at amplitudes of <0.2 Å. Changes in amplitude are monitored using a lock-in amplifier. For small amplitudes and far below the first resonance, the total measured interaction stiffness, k_{tot} , is given by

$$k_{\text{tot}} = -\frac{dF}{dz} = k_{\text{lever}} \left(\frac{A_0}{A} \cos\varphi - 1 \right). \quad (1)$$

Here A_0 is the (fixed) amplitude of the lever when far from the surface, A is the measured amplitude as the surface is approached, k_{lever} is the calibrated lever stiffness, F is the total force, φ is the phase difference between the drive and the lever, and z is the tip-sample displacement. The phase difference φ between the driving signal

and the actual lever motion gives a measure of losses. The lever stiffness was directly calibrated by applying a known force via a calibrated counterlever and measuring the displacements with an interferometer. The tip and lever were made of 90% Pt/10% Ir and the sample was Cu(100) which was cleaned by alternating sputtering and annealing cycles and checked by LEED and scanning tunneling microscopy (STM) imaging. The UHV base pressure was 7×10^{-9} Pa.

Now, there will be contributions to the phase shift φ from intrinsic losses in the lever as well as due to interactions of the tip with the surface [11]. In our case, the Q of the lever was measured to be about 700, the system is operated far below resonance, the phase angles are small, and the lever amplitude is very close to the driving amplitude. Thus the intrinsic lever damping term will remain very small (about 10^{-4} of the losses due to tip-surface interactions) and it can easily be verified that it can be neglected in our case. The tip-surface interaction power loss is therefore to a good approximation given by [11]

$$P_{\text{loss}} = \frac{1}{2} k_{\text{lever}} \omega A_0 A \sin \varphi. \quad (2)$$

The energy loss per cycle is then given by

$$E_{\text{loss}} = \frac{2\pi P_{\text{loss}}}{\omega} = \pi k_{\text{lever}} A_0 A \sin \varphi. \quad (3)$$

The maximum damping force can be written as

$$F_{\gamma} = \frac{E_{\text{loss}}}{\pi A}. \quad (4)$$

Figure 1 shows the interaction stiffness, k_{tot} , and the phase, φ , measured as a function of tip to sample displacement. The interaction stiffness can be separated into a long range van-der-Waals term and a short range covalent part [1,2]. Here the short range term was due to an

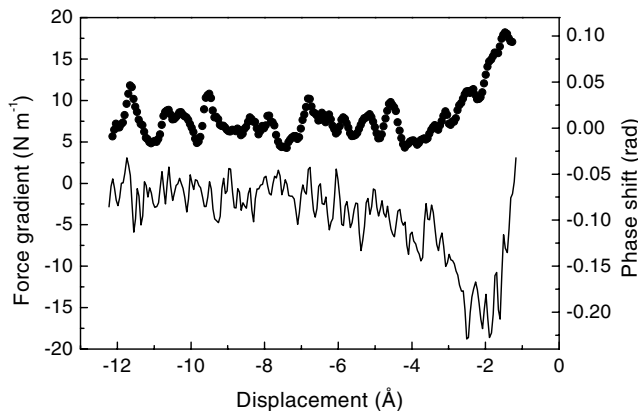


FIG. 1. Total interaction stiffness (line) and phase (circles) measured between a Pt/Ir tip and cantilever and a Cu(100) sample. Note that the onset of the phase change coincides with the onset of short range attractive interactions between tip and sample. A_0 was 0.14 \AA and $\omega = 6283 \text{ rad s}^{-1}$.

interaction with a length range of 0.63 \AA and a binding energy of 1.24 eV , and the van-der-Waals radius of the tip was 10.3 nm . The phase was found to only change once the tip enters the short range potential region. No measurable phase change was ever observed at distances where only long range forces are significant. This indicates that losses in the tip-surface region are highly localized, and are not due to some mechanism affecting the macroscopic tip structure.

In Fig. 2, the energy loss per cycle (3) is plotted versus distance. It can be seen that the energy loss is a very steep function of the separation. The losses are of the order of 10 's of meV, which is significantly lower than values reported from large amplitude AFM measurements [3–5]. Obviously, the kinetic energy available in our lever system is much lower, but just as importantly, the dissipation mechanism is restricted to local tip-surface interactions, and does not involve a large overall geometrically bistable tip trajectory [9]. The maximum damping force (4) is equal to $1.2 \times 10^{-10} \text{ N}$.

The above observations imply an origin of the dissipation in the immediate vicinity of the tip-surface region. The obvious candidate is an atom or defect with two sites separated by an energy barrier, which can be driven between these sites by the force between tip and surface. Such an atom is very likely to be found at or immediately adjacent to the tip apex. The atomic motion is rapid compared to the lever, and thus the relaxation energy goes almost entirely into phonons rather than back to the lever kinetic energy. Consequently, energy is ultimately removed from the kinetic energy of the lever and dissipated into phonons and heat.

In the following we present a simple mechanism which gives rise to the observed phase shift between the lever excitation and tip motion and thus the energy dissipation. We assume a defect to be present in the tip-surface region

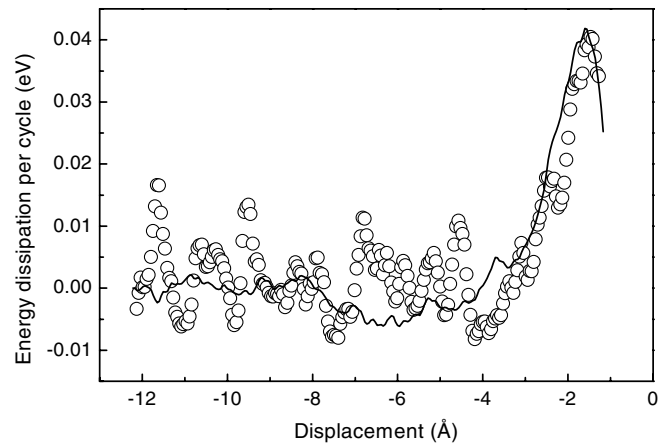


FIG. 2. Energy dissipated per cycle (circles) during the measurement shown in Fig. 1. The line indicates a fit using Eq. (8) and the integral of the short range part of force gradient data of Fig. 1.

which can take either of two energy states E_1 and E_2 which are separated by an energy barrier E_A . The characteristic transition (relaxation) time between the two levels is given by

$$\tau = \tau_0 \exp\left(\frac{E_A}{k_B T}\right). \quad (5)$$

As the tip moves through the tip-surface potential the energy levels E_1 and E_2 are shifted by an amount ΔE . For small amplitudes A we can write

$$\Delta E(t) = F(z)A \sin(\omega t). \quad (6)$$

If the relaxation time τ is sufficiently close to the period of the tip oscillation it will induce a phase shift α between the motion of the tip and the defect. We then expect a hysteresis in energy [12]. The phase shift α is given by

$$\tan \alpha = \omega \tau. \quad (7)$$

The energy loss associated with this dynamic hysteresis is given by

$$E_{\text{diss}} = F(z)A \sin \alpha = F(z)A \frac{\omega \tau}{\sqrt{1 + (\omega \tau)^2}}. \quad (8)$$

This very simple model contains only one fitting parameter, the energy barrier E_A . Using the dissipation data shown in Fig. 2 and the short range component of the measured force, the energy E_A was found to be 0.47 eV. The corresponding relaxation time (assuming $\tau_0 = 10^{-12}$ sec) was 86 μsec . Averaged over several measurements—which were obtained at amplitudes ranging from 0.11 Å to 0.17 Å—we found 0.49 ± 0.12 eV for the energy. This is a reasonable energy, of the magnitude associated with defect motion. As shown in Fig. 2, the model recreates the shape and magnitude of the measured dissipation quite well.

The induced atomic motion leads to an anelastic response of the tip-surface system which is not unlike internal friction models in bulk materials. We also used models analogous to internal friction by modeling the tip as a Maxwell element [13]. While such a model is possibly more realistic, it leads to the same value for E_A and involves a larger number of fitting parameters. The value of E_A is essentially determined by the observed phase shifts and thus a relaxation time of the order of 10's of μsec and an energy barrier of ≈ 0.5 eV.

The presented mechanism preserves the integrity of the tip. While atomic motion plays a role in the dissipation mechanism, this motion is bistable and returns to its original position during each retraction cycle. This is consistent with the observed stability of images, so that even in the presence of significant dissipation, atomic resolution imaging is possible [4,14,15]. Atomic resolution dissipation imaging therefore results from the atom-by-atom variation of the short range interaction and thus of the energy losses as the tip is scanned across the surface.

The preceding model becomes inadequate once the interaction stiffness incorporates significant repulsion, be-

cause then the local forces are not simply related to overall stiffness. A crucial observation [2] is the fact that the overall force curves (from ∞ to closest approach) tend to be completely reversible (i.e., approach and retract curves are not displaced) as long as the stiffness remains negative. This is compatible with the preceding measurements of energy loss, because the time constant for the relaxation (86 μsec) is much shorter than the time (a few 10's of seconds) to measure an overall force-displacement curve. However, once the stiffness becomes positive, we observe significant hysteresis between the approach and retract curves [2]. Within the preceding model this means that we are accessing more and higher energy (longer relaxation time) atomic motion processes, i.e., plastic deformation. The overall (dc) hysteresis loop can be integrated to give the associated mechanical energy loss. The energy loss depends on the distance by which we compress beyond the zero stiffness intercept, as shown in Fig. 3. Interestingly, we find that the energy loss for a tungsten tip indenting a silicon surface is some 7–8 times the energy loss of Pt/Ir against copper for the same compression distance. While we cannot exclude a systematic difference in tip shape, most of this energy difference is likely to be due to different mechanical properties.

The origin of this energy loss can be attributed to adhesion and plastic deformation. For the larger energies the plastic deformation component becomes dominant. Macroscopic parameters, such as the hardness, do not apply at this scale and cannot be used to estimate the energies. Molecular dynamics simulations (e.g., [16]) suggest that many atoms in the indenting neck region are undergoing displacement transitions once the stiffness becomes repulsive. It is therefore sensible to assign the majority of the energy to bond breaking and reforming.

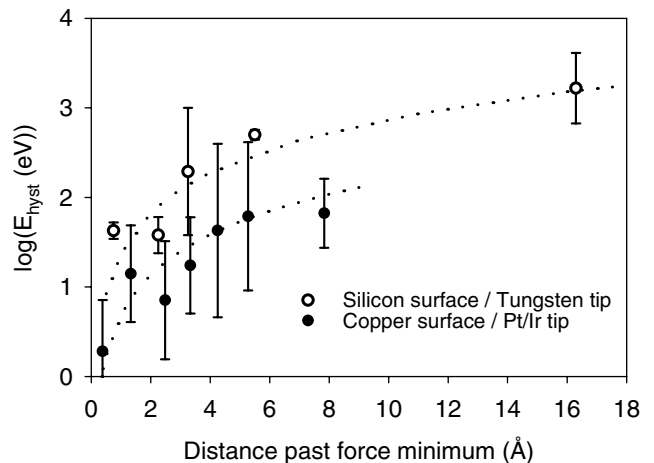


FIG. 3. Energy associated with hysteresis loop as the tip is first approached and then retracted from the surface. Plotted versus the maximum depth past the minimum of the force curve. The deformation energy is about 1 order of magnitude higher for silicon than for copper. The lines indicate fits using Eq. (9). For parameters see text.

In a simple model, the total dissipated energy will be a function of the energy needed to move atoms from their equilibrium positions and the total number of displaced atoms. The variation of the number of affected atoms with displacement implies a power law dependence of the dissipated energy on the indentation depth ($\Delta E = C\Delta z^m$). A least squares fit gives $m = 1.02$ and $C = 6.73$ (ΔE in eV and Δz in Å) for the case of copper indented with a Pt/Ir tip and $m = 1.37$ and $C = 27.92$ in the case of Si indented with a W tip. Thus the exponents, m , are between 1 and 2 (but closer to 1). An exponent of 1.5 corresponds to a paraboloid tip, in which case we find

$$\Delta E = \frac{V}{V_a} E_b = \frac{2\pi}{3V_a} (\sqrt{2Rh})^3 E_b. \quad (9)$$

Here V is the deformed volume, V_a is the atomic volume in the lattice, h is the penetration depth of the tip, R is a characteristic radius of curvature at the apex, and E_b is a bonding energy that describes the energy needed to move an atom out of its equilibrium position. Bulk self-diffusion energies are of the order of 2.1 eV for Cu and 4.8 eV for Si and surface diffusion energies are 0.25 and 0.67 eV, respectively, the latter being in the range of energies discussed earlier in this paper. Fitting the data shown in Fig. 3 for these values of E_b we find $R = 2.8\text{--}11.6$ Å and $R = 6.5\text{--}24.2$ Å for Cu and Si, respectively. It is interesting to note that irreversibility is likely to be not solely the result of high energy processes, but can just as well be due to the large number of related atomic displacements and the resulting configurational entropy. One difference between the dynamic, “reversible” dissipation discussed in the first part of the paper and the nanoscale plasticity presented here might be the role of entropy, and it is this transition between single atomically reversible processes and larger scale, entropic processes which we are able to probe using AFM.

We have shown that by using a quantitative AFM technique the atomic-scale dissipation during AFM operation can be measured at a chosen, essentially fixed separation. In the noncontact regime, dynamic loss processes can be explained by a coupling of the tip-surface interaction forces into an anelastic process involving atomic defect motion in the tip region. As the tip enters the contact region, dc hysteresis is observed which is associated with large energy

losses. These are related to longer time scale atomic motion and thus nanoscale plasticity.

This project is partially supported by the British Council.

*Electronic address: hoffmann@physics.wayne.edu

- [1] M. Guggisberg, M. Bammerlin, C. Loppacher, O. Pfeiffer, A. Abdurixit, V. Barwich, R. Bennewitz, A. Baratoff, E. Meyer, and H.-J. Güntherodt, *Phys. Rev. B* **61**, 11 151 (2000).
- [2] P.M. Hoffmann, A. Oral, R.A. Grimble, H.Ö. Özer, S. Jeffery, and J.B. Pethica, *Proc. R. Soc. London A* **457**, 1161 (2001).
- [3] B. Gotsmann, C. Seidel, B. Anczykowski, and H. Fuchs, *Phys. Rev. B* **60**, 11 051 (1999).
- [4] C. Loppacher, R. Bennewitz, O. Pfeiffer, M. Guggisberg, M. Bammerlin, S. Schär, V. Barwich, A. Baratoff, and E. Meyer, *Phys. Rev. B* **62**, 13 674 (2000).
- [5] B. Gotsmann and H. Fuchs, *Phys. Rev. Lett.* **86**, 2597 (2001).
- [6] M. Gauthier and M. Tsukada, *Phys. Rev. B* **60**, 11 716 (1999).
- [7] I. Dorofeyev, H. Fuchs, G. Wenning, and B. Gotsmann, *Phys. Rev. Lett.* **83**, 2402 (1999).
- [8] B.N.J. Persson and A.I. Volokitin, *Phys. Rev. Lett.* **84**, 3504 (2000).
- [9] M. Gauthier and M. Tsukada, *Phys. Rev. Lett.* **85**, 5348 (2000).
- [10] H. Hölscher, U.D. Schwarz, and R. Wiesendanger, *Appl. Surf. Sci.* **140**, 344 (1999).
- [11] B. Anczykowski, B. Gotsmann, H. Fuchs, J. Cleveland, and V.B. Elings, *Appl. Surf. Sci.* **140**, 376 (1999).
- [12] L.N. Kantorovich, *J. Phys. Condens. Matter* **13**, 945 (2001).
- [13] K.W. Andrews, *Physical Metallurgy—Techniques and Applications* (George Allen & Unwin, London, 1973), Vol. 2.
- [14] S. Molitor, P. Gütthner, and T. Berghaus, *Appl. Surf. Sci.* **140**, 276 (1999).
- [15] R. Bennewitz, A.S. Foster, L.N. Kantorovich, M. Bammerlin, C. Loppacher, S. Schär, M. Guggisberg, E. Meyer, and A.L. Shluger, *Phys. Rev. B* **62**, 2074 (2000).
- [16] J.B. Pethica and A.P. Sutton, in *Forces in Scanning Probe Methods*, edited by H.-J. Güntherodt, D. Anselmetti, and E. Meyer (Kluwer Academic Publishers, Dordrecht, 1995), NATO ASI, Ser. E, Vol. 286, pp. 353–366.